

CT WLAN Serial Client Bridge

Wireless COM Server

The CT WLAN Serial Client Bridge from CyberTEC extends wireless networking capabilities to manufacturing machinery, printers, scales, medical equipment, bar code readers, time clocks, point of sale, and other data collection.

It provides a reliable, cost effective interface between devices utilizing RS-232 serial or Ethernet ports and a wireless LAN access point. The aluminum durable case design features an accessible slot for inserting a PCMCIA Card of your choice.

Wireless Connectivity for Serial and Ethernet Devices

The CT WLAN Serial Client Bridge from CyberTEC utilizes TCP/IP to provide a reliable transport mechanism for serial data over WLAN. Baud rates up to 115,200 can be supported with hardware or software flow control. Up to 4 serial ports are available on the CT WLAN Serial Client Bridge.

Designed for Easy Configuration

The CT WLAN Serial Client Bridge from CyberTEC can be configured for your wireless installation with the specific data parameters. Installation through serial management port Telnet or the Windows based CT AirManager.

Standards-based

Supports IEEE 802.11 and IEEE 802.11b WiFi PC Cards, ensuring interoperability with wireless LAN products from other vendors. Choose ad-hoc connections to access other wireless devices, without using an access point, or configure this wireless bridge for infrastructure mode to get widespread network access through one or more access points.



Reason to Buy

Our CT WLAN Serial Client Bridge works great for people and companies who want:

- Simplified, wireless data connections using an Ethernet or serial port
- Wireless support for CNC's, bar code readers, scales, eCAM, printers, scanners and other devices
- Access the LAN in areas where wires are a hassle or the machine moves a lot. Where you would have wires hanging from the ceiling or lying on the floor

Easy Configuration

Configuration (wireless installation, TCP/IP stack choices and serial data parameter) are stored in a non-volatile Flash Memory. Access the configuration parameter with a serial based terminal emulator (direct or telnet) or with the CT AirManager utility.

The configuration can be password protected (2 security levels)

Customer Support

Quick support information is available by email: support@ctwlan.info

Free Mobility for your Data

Product Information

Interfaces

Ethernet interface

- RJ-45 10BASE-T

Serial interface

- RS-232, DB9 male 300 - 115200 bps
- DTE / DCE each port selectable
- Soft configured bridges
- 1.5 kV ESD protection
- Flow control: None, Software (XOn /XOff) and Hardware (RTS/CTS) selectable

Barcode interface

- Support for bar code reader with PS/2 or serial interface

Centronics Parallel Port

- DB 25 female

Management

- Status LED's for Power, Error, WLAN Traffic
- Status LED's Rx, Tx each RS232 Port
- Configure via serial management Port, Telnet connection or with the CT AirManager utility
- COM Port redirector for Windows

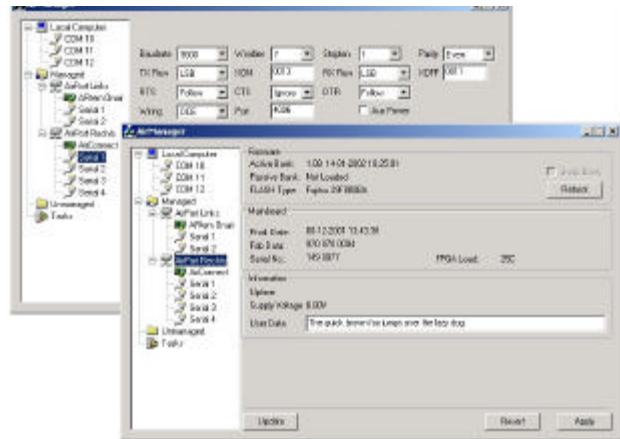
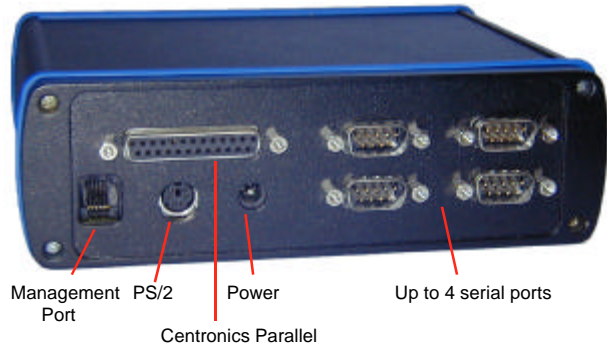
Supported WLAN functions*

*depends on used PC Card

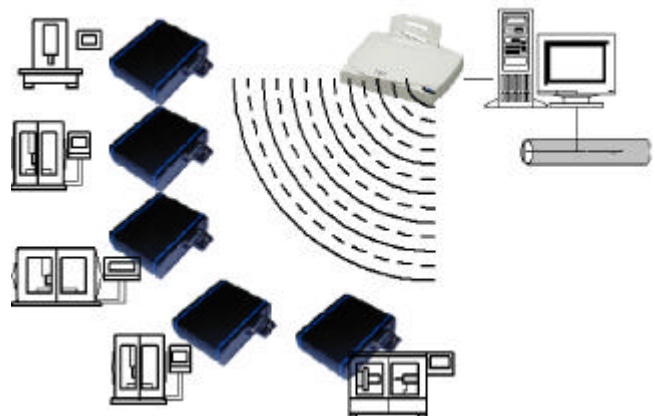
- IEEE 802.11b, WiFi compatible
- Automatic Rate Selection (ARS)
11Mbps, 5Mbps, 2Mbps, 1Mbps
- Frequency Range 2.4 – 2.5 GHz
- 40 and 128 bit WEP encryption support
- Infrastructure and ad-hoc mode
- Extended roaming support

Power and Environment

Power Supply	9-24V DC / 500mA 100-240V 50/60Hz ext. adapter
Length	170mm (6.6in)
With	140mm (5.5in)
Thickness	50mm (2.0in)
Weight	650g
Operating temp	0 to 55 °C
Humidity	10 to 95% non-condensing
Case	aluminum black



CT AirManager Utility



Sample Application

CyberTEC

CyberTEC GmbH
CH - 8193 Eglisau
www.ctwlan.info

Distributor:



wireless world ag

Order Information

Product no	Description
CT0701	Basic with 1 serial port
CT0702	Basic with 2 serial ports
CT0704	Basic with 4 serial ports
EU	Power Supply Europe
US	Power Supply US
PS	Option PS/2 bar code Interface
CI	Option Centronics Interface
Sample Order no	CT0702-EUPS *
	* 2 Port with Power Supply Europe and PS/2 bar code Interface

© CyberTEC GmbH 2001-2003 specifications are subject to change without notice.
All product and company names are trademarks, service marks or registered trademarks of their respective owners